



# Honel Structural Products (Pty) Ltd.



## A- SERIES BEARINGS



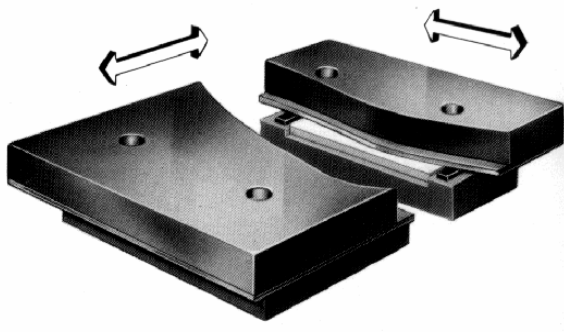


# Honel standard structural bearings: A Series

**Description:** Bearings in this series are designed to support loads of up to 2000kN(200 tonnes) at bearing surface temperatures of up to 150 ° C. For temperatures between 150° C and 250° C the bearings must be derated.

Translation in the plane of movement is maintained at a low frictional resistance by the use of mating surfaces, polished stainless steel and PTFE.

Designs incorporating alternate bearing material can be used in applications where vibration or heat is a problem. Designers should raise these applications with our technical staff.

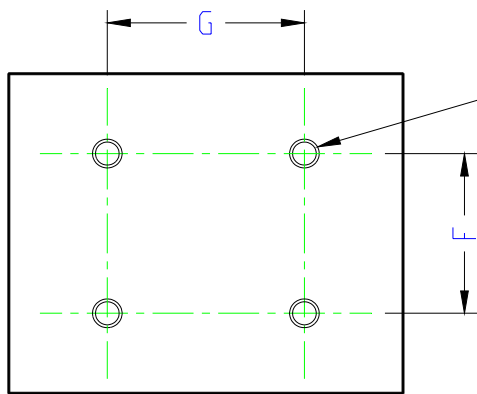
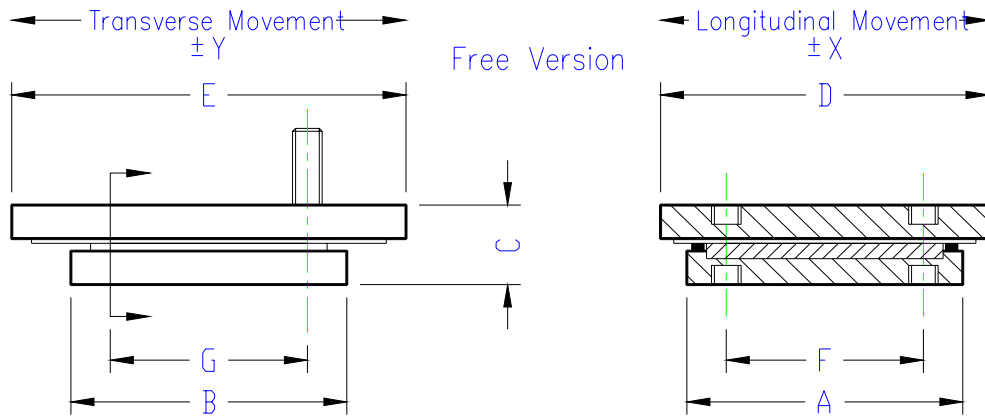


## Bearing Selection & Part No.

Attachment Method	FREE VERSIONS	CONSTRAINED VERSIONS
Bonding or Welding	AG	AG- /C
Top & base plates with threaded holes	AH	AH- /C
Threaded studs in top and base plate	AJ	AJ- /C
Threaded studs in base plate & top plate	AK	AK- /C

Example 1. Required attachment - Threaded holes in top and base plates.  
 Required load capacity - 1500kN  
 Dimension 'A' - 275mm  
 Required Movements 'X' - ±25mm  
 'Y' - ±12,5mm  
**Part No. AH 150/275/50/25**

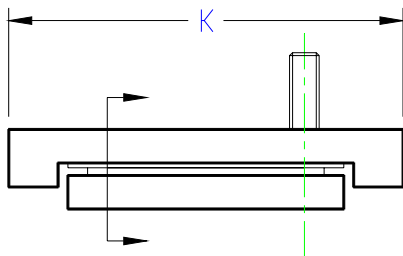
Example 2. Bearing same as for example 1 but constrained in 'Y' direction.  
**Part No. AH 150/275/50/C**



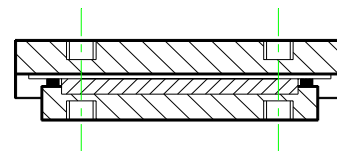
M 20 x 2.5 Tapped Holes or Studs as specified if applicable.

Holes in the structure to suit the bearings should be drilled 23mm diameter on centres G & F within  $\pm 1$  mm.

For bearings supplied with studs the holes should be chamfered 2 mm at  $45^\circ$  on the side adjacent to the bearing.



Constrained Version



**Greater Movements:-**

Can be provided on request

**Material Specifications:-**

Top plate base plate & studs	- Mild Steel
Bearing plate	- Stainless steel
Bearing Material	- PTFE or other on special applications
Standard finish	- Primer

All dimensions are in millimetres

PART NUMBER	LOAD KN	PART No.SUFFIX *					25/25	25/C	50/25	50/C	75/25	75/C	50/50				
		MOVEMENT					X=12.5			X=25			X=37.5			X=25	
							Y=12.5	Y=1.5		Y=12.5	Y=1.5		Y=12.5	Y=1.5		Y=25	
		A	B	F	G	C	E	D	K	E	D	K	E	D	K	E	D
/110/125/*	100	125	125	85	85	55	145	145	180	145	170	180	145	195	180	170	170
/110/95/*	100	95	155	55	115	55	175	115	210	175	140	210	175	165	210	200	140
/120/160/*	200	160	160	120	120	55	180	180	215	180	205	215	180	230	215	205	205
/120/125/*	200	125	210	85	170	55	230	145	265	230	170	265	230	195	265	255	170
/130/185/*	300	185	185	135	135	55	205	205	240	205	230	240	205	255	240	230	230
/130/145/*	300	145	245	95	195	55	270	165	305	270	190	305	270	215	305	295	190
/140/210/*	400	210	210	160	160	55	230	230	265	230	255	265	230	280	265	255	255
/140/160/*	400	160	280	110	230	55	300	180	335	300	205	335	300	230	335	325	205
/150/230/*	500	230	215	155	155	55	250	250	285	250	275	285	250	300	285	275	275
/150/175/*	500	175	295	100	235	55	330	195	365	330	220	365	330	245	365	355	220
/160/250/*	600	250	235	175	175	55	270	270	305	270	295	305	270	320	305	295	295
/160/185/*	600	185	320	110	260	55	360	210	390	360	235	390	360	260	390	385	235
/170/265/*	700	265	250	190	190	55	285	285	320	285	310	320	285	335	320	310	310
/170/195/*	700	195	340	120	280	55	375	220	410	375	245	410	375	265	410	400	245
/180/280/*	800	280	265	180	180	55	300	300	335	300	325	335	300	350	335	325	325
/180/210/*	800	210	365	110	280	55	400	230	435	400	255	435	400	280	435	425	255
/190/290/*	900	290	275	190	190	55	315	315	350	315	340	350	315	360	350	335	340
/190/215/*	900	215	380	115	295	55	415	235	450	415	260	450	415	285	450	440	260
/100/305/*	1000	305	290	205	205	55	325	325	360	325	350	360	325	375	360	350	350
/100/230/*	1000	230	405	130	320	55	440	250	475	440	275	475	440	300	475	465	275
/110/320/*	1100	320	305	195	195	55	340	340	375	340	365	375	340	390	375	365	365
/110/240/*	1100	240	425	115	315	55	460	260	495	460	285	495	460	310	495	485	285
/120/330/*	1200	330	315	205	205	55	350	350	385	350	375	385	350	400	385	375	375
/120/250/*	1200	250	445	125	335	55	480	270	515	480	295	515	480	320	515	505	295
/130/345/*	1300	345	330	220	220	55	365	365	400	365	390	400	365	415	400	390	390
/130/255/*	1300	255	455	130	345	55	490	275	525	490	300	525	490	325	525	515	300
/140/355/*	1400	355	340	205	205	55	375	375	410	375	400	410	375	425	410	400	400
/140/265/*	1400	265	475	115	340	55	510	285	545	510	310	545	510	335	545	535	310
/150/370/*	1500	370	355	220	220	55	390	390	425	390	415	425	390	440	425	415	415
/150/275/*	1500	275	480	125	345	55	515	295	550	515	320	550	515	345	550	540	320
/175/395/*	1750	395	380	245	245	55	415	415	450	415	440	450	415	465	450	440	440
/175/290/*	1750	290	525	140	390	55	560	310	595	560	335	595	560	360	595	585	335
/200/420/*	2000	420	405	270	270	55	440	440	475	440	465	475	440	490	475	465	465
/200/315/*	2000	315	565	165	430	55	600	330	635	600	355	635	600	380	635	625	355

## **Check list for the installation of bearings**

### **DO –**

1. Handle carefully and where necessary with adequate craneage
2. Store in a clean dry place.
3. Ensure that bearings are installed in the correct location and orientation.
4. Ensure that bearings are installed on a flat rigid bed before the design loads are applied.
5. Ensure that fixings are uniformly tightened.
6. Complete any site coatings and make good any corrosion protection damaged during handling and installation.
7. Protect the working surfaces during the placement of in-situ concrete.
8. Keep the bearings and surrounding areas clean.
9. Remove any temporary transit clamps etc. before the bearings are required to operate.
10. Take special care to support top plates when casting in-situ concrete.

### **DO NOT –**

1. Dismantle bearings on site.
2. Leave bearings uncovered.
3. Install any bearings showing signs of damage.
4. Attempt to modify without approval.
5. Install without qualified supervision.

### **Honel Structural Products (Pty) Ltd.**

#### **Physical Address:**

Unit 16, 8 Reed Place  
Maxmead  
Pinetown

#### **Postal Address:**

18 Padfield Road  
Pinetown  
3610

Phone:+27 31 701 1355

Fax:+27 31 701 1356

Cell:+27 83 630 21 26

Web Site: [www.honel.co.za](http://www.honel.co.za)

E-mail: [sales@honel.co.za](mailto:sales@honel.co.za)